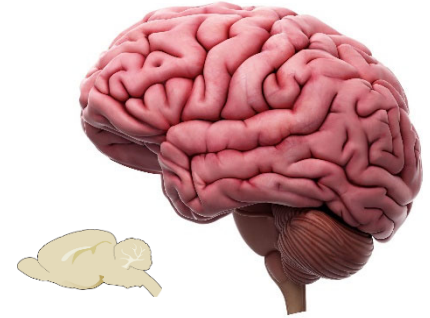


PSY 4911
Research Methods in Behavioral and Cognitive Neuroscience (BCN)

Meeting times: variable (Check with your primary faculty or graduate student supervisor)
Room: variable (Check with your primary faculty or graduate student supervisor)
Credits: variable (0-3, Check with your primary faculty or graduate student supervisor)
Professor: Darragh P. Devine, Ph.D.
dpdevine@ufl.edu
273-2174



Course Description: This is a course on research methods and applications in Behavioral and Cognitive Neuroscience (BCN). You will choose a faculty member and/or graduate student(s) who agrees to directly mentor/supervise your work. That supervisor will be selected from the faculty who have appointments in the BCN program in the Department of Psychology (see <https://psych.ufl.edu/behavioral-and-cognitive-neuroscience/people-2/>), or from faculty in related Neuroscience disciplines (see <https://mbi.ufl.edu/members/mbi-membership/>). If your mentor/supervisor is not from the BCN program, you need to have a member of the BCN program agree to sponsor your project.

The specific activities in which students engage vary from semester to semester, and from lab to lab. Be sure to fill out the [PSY 4911 Research Form](#), and indicate BCN “area.”

Course Objectives: By the end of the semester, students will be able to perform research tasks, that may include, but are not limited to managing animals or scheduling participants, collecting data, preparing data for analysis, literature reviews, and assisting with results presentation.

Textbook: There is no specific textbook, but your lab will most likely recommend or assign readings related to the research projects.

Lab Meetings: These are variable, but most labs meet once per week. Your attendance at research meetings is arranged between you and your lab supervisors.

Lab Activities: These are variable, but most labs have activity several times per week if not daily, depending on the specific lab with which you are doing work. Your specific activities will be assigned by your research supervisors.

Attendance and Make-up Work: Requirements for laboratory participation, assignments, and other work in this course are consistent with [University of Florida attendance policies](#).

Grading: Your performance is graded as “Satisfactory” or “Unsatisfactory” by your research supervisor.

Students Requiring Accommodations: Students with disabilities who experience learning barriers and would like to request academic accommodations should connect with the [Disability Resource Center](#). It is important for students to share their accommodation letter with their instructor and discuss their access needs, as early as possible in the semester.

Course Evaluation: Individual work courses are not included in the UF course evaluation system.

Academic Honesty Guidelines: UF students are bound by The Honor Pledge which states, “We, the members of the University of Florida community, pledge to hold ourselves and our peers to the highest standards of honor and integrity by abiding by the Honor Code. On all work submitted for credit by students at the University of Florida, the following pledge is either required or implied: “On my honor, I have neither given nor received unauthorized aid in doing this assignment.” The Conduct Code specifies a number of behaviors that are in violation of this code and the possible sanctions. [Click here to read the Conduct Code](#). If you have any questions or concerns, please consult with the instructor or TAs in this class.

In-Class Recording: Students are allowed to record video or audio of class lectures. However, the purposes for which these recordings may be used are strictly controlled. The only allowable purposes are (1) for personal educational use, (2) in connection with a complaint to the university, or (3) as evidence in, or in

preparation for, a criminal or civil proceeding. All other purposes are prohibited. Specifically, students may not publish recorded lectures without the written consent of the instructor.

A “class lecture” is an educational presentation intended to inform or teach enrolled students about a particular subject, including any instructor-led discussions that form part of the presentation, and delivered by any instructor hired or appointed by the University, or by a guest instructor, as part of a University of Florida course. A class lecture does not include lab sessions, student presentations, clinical presentations such as patient history, academic exercises involving solely student participation, assessments (quizzes, tests, exams), field trips, private conversations between students in the class or between a student and the faculty or lecturer during a class session.

Publication without permission of the instructor is prohibited. To “publish” means to share, transmit, circulate, distribute, or provide access to a recording, regardless of format or medium, to another person (or persons), including but not limited to another student within the same class section. Additionally, a recording, or transcript of a recording, is considered published if it is posted on or uploaded to, in whole or in part, any media platform, including but not limited to social media, book, magazine, newspaper, leaflet, or third party note/tutoring services. A student who publishes a recording without written consent may be subject to a civil cause of action instituted by a person injured by the publication and/or discipline under UF Regulation 4.040 Student Honor Code and Student Conduct Code.

Campus Resources - Health and Wellness:

U Matter, We Care: If you or someone you know is in distress, please contact umatter@ufl.edu, 352-392-1575, or visit [U Matter, We Care website](#) to refer or report a concern and a team member will reach out to the student in distress.

Counseling and Wellness Center: [Visit the Counseling and Wellness Center website](#) or call 352-392-1575 for information on crisis services as well as non-crisis services.

Student Health Care Center: Call 352-392-1161 for 24/7 information to help you find the care you need, or [visit the Student Health Care Center website](#).

University Police Department: [Visit UF Police Department website](#) or call 352-392-1111 (or 9-1-1 for emergencies).

UF Health Shands Emergency Room / Trauma Center: For immediate medical care call 352-733-0111 or go to the emergency room at 1515 SW Archer Road,

Gainesville, FL 32608; [Visit the UF Health Emergency Room and Trauma Center website](#).

GatorWell Health Promotion Services: For prevention services focused on optimal wellbeing, including Wellness Coaching for Academic Success, visit the [GatorWell website](#) or call 352-273-4450.

Campus Resources - Academic:

E-learning technical support: Contact the [UF Computing Help Desk](#) at 352-392-4357 or via e-mail at helpdesk@ufl.edu.

Career Connections Center: Reitz Union Suite 1300, 352-392-1601. Career assistance and counseling services.

Library Support: Various ways to receive assistance with respect to using the libraries or finding resources.

Teaching Center: Broward Hall, 352-392-2010 or to make an appointment 352- 392-6420. General study skills and tutoring.

Writing Studio: 2215 Turlington Hall, 352-846-1138. Help brainstorming, formatting, and writing papers.

Student Complaints On-Campus: [Visit the Student Honor Code and Student Conduct Code webpage for more information](#).

On-Line Students Complaints: [View the Distance Learning Student Complaint Process](#).