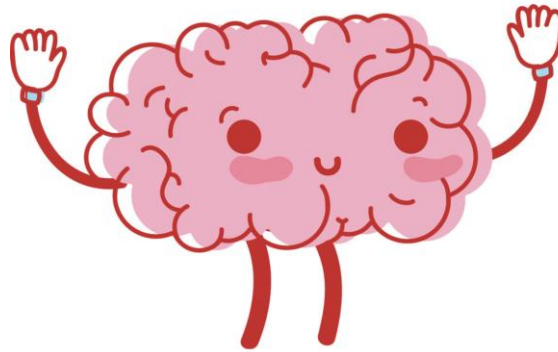


# PSY2012: General Psychology Syllabus Summer B 2021



**In-Person Class/Section:** 17376 (4997)

**Instructor:** Liz Kerner, M.S.

**Email:** [ekerner@ufl.edu](mailto:ekerner@ufl.edu)

**Office:** PSY 268

**Teaching Assistant:** TBA

**In-person class meeting:** M, T, W, Th, F – Period 4 (12:30-1:45) @ PSY0130

**Zoom & Physical Office Hour:** Wednesdays online or in person 2-3pm, Tuesdays online only 2-3pm, **OR** By Appointment

<https://ufl.zoom.us/j/97449572731?pwd=ODI0OUVJN1N5RzdjQ0tsRG1hcEJWdz09>

**ALL ASSIGNMENTS ARE DUE IN EASTERN TIME (ET)**

## Contacting your instructor

- Please contact me (Liz) with all primary concerns or questions regarding this course or course materials. Quick questions can be asked in class or via email ([ekerner@ufl.edu](mailto:ekerner@ufl.edu)).
- If you have larger questions or concerns, feel free to come to my office hours or schedule a meeting! I am happy to accommodate your schedule, but am generally more free to meet in the afternoons.
- **BEFORE CONTACTING ME VIA EMAIL, PLEASE:**
  - Check to see if the answer to your question is in the **syllabus**
  - Check to see if the answer to your question is posted to **Canvas**
  - Check to see if the answer to your question is in any **course material** (announcements on Canvas, emails from me)
- **When you email me:**
  - Please include PSY2012 in the subject line of your emails, as emails sent without this may be treated as junk mail by spam filters
  - Allow for **24 hours during the work week for me to respond** (e.g., do not email last minute about time sensitive issues).

- Be aware: questions sent less than two days before an assignment is due may not receive a response until after the deadline is passed. Ask early!!!
- Emails sent on the weekend will be responded to during the following weekdays. So, if you email me on a Friday night, you likely won't hear from me until Monday.
- Remember: there are no silly questions! I'd rather you ask what you have on your mind than be confused or conflicted about anything in the course.
- **Do not email your TA.**

### Required Materials

**Textbook Title:** Psychology: From Inquiry to Understanding, 4<sup>th</sup> edition  
**Author:** Lilienfeld  
**ISBN:** 9781323785669

Please note that PSY 2012 participates in the UF All Access program for the Summer B 2020 semester. Students will have two options to gain access to the required materials when classes begin in July. Students will have a choice to "Opt-In" to REVEL e-book access through a link provided in Canvas the week before classes begin for a reduced price and pay for these materials through their student UF account. Students who do not choose this option will be able to purchase a standalone code or package through the UF Bookstore. All options provide access to the same online materials.

You can log in to the Gator1 Central portal and view your participating courses the week before classes begin here: <https://www.bsd.ufl.edu/G1CO/IPay1f/start.aspx?TASK=INCLUDED>  
 Package ISBN is 9780134761749

### Live Session Recording Statement

Our class sessions may be audio visually recorded for students in the class to refer back and for enrolled students who are unable to attend live. Students who participate with their camera engaged or utilize a profile image are agreeing to have their video or image recorded. If you are unwilling to consent to have your profile or video image recorded, be sure to keep your camera off and do not use a profile image. Likewise, students who un-mute during class and participate orally are agreeing to have their voices recorded. If you are not willing to consent to have your voice recorded during class, you will need to keep your mute button activated and communicate exclusively using the "chat" feature, which allows students to type questions and comments live. The chat will not be recorded or shared. As in all courses, unauthorized recording and unauthorized sharing of recorded materials is prohibited.

### Social and Behavioral Sciences General Education Area Objectives

Social and behavioral science courses provide instruction in the history, key themes, principles, terminology, and underlying theory or methodologies used in the social and behavioral sciences. Students will learn to identify, describe and explain social institutions, structures or processes. These courses emphasize the effective application of accepted problem-solving techniques. Students will apply formal and informal qualitative or quantitative analysis to examine the processes and means by which individuals make personal and group decisions, as well as the evaluation of opinions, outcomes or human behavior. Students are expected to assess and analyze ethical perspectives in individual and societal decisions.

## General Education Student Learning Outcomes

| Category                 | Institutional Definition  | Institutional SLO  |
|--------------------------|---|--|
| <b>CONTENT</b>           | Content is knowledge of the concepts, principles, terminology and methodologies used within the discipline.   | Students demonstrate competence in the terminology, concepts, methodologies and theories used within the discipline.   |
| <b>COMMUNICATION</b>     | Communication is the development and expression of ideas in written and oral forms.   | Students communicate knowledge, ideas, and reasoning clearly and effectively in written or oral forms appropriate to the discipline.   |
| <b>CRITICAL THINKING</b> | Critical thinking is characterized by the comprehensive analysis of issues, ideas, and evidence before accepting or formulating an opinion or conclusion. | Students analyze information carefully and logically from multiple perspectives, using discipline specific methods, and develop reasoned solutions to problems. These will be accomplished through assignments and assessments given in this course. |

## Overview: PSY 2012

This course is an overview of major topics in modern psychology, the scientific study of behavior, and mental processes. As a first course in the discipline of psychology, it introduces some of the fundamental concepts, principles, and theories with a consideration for the complexity of human behavior.

## Course Goals

1. To teach you the science behind psychology and how it differs from the media's interpretation.
2. To provide you with an introduction to the different areas within the field of psychology.
3. To teach you the concepts in the field and how to apply them.

## Expectations

You are expected to attend class regularly (i.e., attend the synchronous meetings on Zoom or in-person) and complete the reading assignments listed in this syllabus. You are also expected to check your email

## Attendance

regularly (at least once a day) and to visit E-learning on a regular basis. Students typically find that for each hour in class, at least two additional hours are required for preparation.

Attendance will not be taken. However, it is highly recommended that you attend all lectures. Missing even one could put you at a significant disadvantage because this course moves quickly.

**IF YOU ARE STRUGGLING THIS SEMESTER**, please reach out to me sooner rather than later. Allow me to be on the same page as you in order to help direct you to appropriate resources, if necessary.

In response to COVID-19, the following recommendations are in place to maintain your learning environment, to enhance the safety of our in-classroom interactions, and to further the health and safety of ourselves, our neighbors, and our loved ones.

- If you are not vaccinated, get vaccinated. Vaccines are readily available and have been demonstrated to be safe and effective against the COVID-19 virus. Visit [one.ufl.edu](https://one.ufl.edu) for screening / testing and vaccination opportunities.
- If you are sick, stay home. Please call your primary care provider if you are ill and need immediate care or the UF Student Health Care Center at 352-392-1161 to be evaluated.
- Course materials will be provided to you with an excused absence, and you will be given a reasonable amount of time to make up work.

### **Students with Special Needs**

If you are a student with a disability and would like to request disability-related accommodations, you are encouraged to contact the Disability Resource Center as early in the semester as possible. The Disability Resource Center is located in 001 Building 0020 (Reid Hall). Their phone number is (352) 392-8565. If you have a documented disability you must contact me immediately so accommodation can be made from that point on.

### **Sexual Harassment & Disclosures of Sexual Violence**

Sexual Harassment is not tolerated in this class, in the Department of Psychology, or at the University of Florida. Sexual harassment includes: the inappropriate introduction of sexual activities or comments in a situation where sex would otherwise be irrelevant. Sexual harassment is a form of sex discrimination and a violation of state and federal laws as well as of the policies and regulations of the university. All UF employees and students must adhere to UF's sexual harassment policy which can be found here: <https://hr.ufl.edu/forms-policies/policies-managers/sexual-harassment/>. Please review this policy and contact a university official if you have any questions about the policy.

As mandatory reporters, university employees (e.g., administrators, managers, supervisors, faculty, teaching assistants, staff) are required to report knowledge of sexual harassment to UF's Title IX coordinator. Title IX violation includes sexual harassment, sexual assault, stalking, domestic/intimate partner violence, etc. For assistance or to inform Title IX any incident(s) that may constitute a Title IX violation, please complete the Title IX Information Form here: <https://titleix.ufl.edu/title-ix-reporting-form/>, or email [inform@titleix.ufl.edu](mailto:inform@titleix.ufl.edu), or call 352-273-1094.

### **Course Technology & UF Policies on Software Use**

The students will be required to have access and use a personal computer with the access to the Internet. You may access Canvas from UF's e-Learning webpage: <https://elearning.ufl.edu/>. Please contact the UF Help Desk, <https://helpdesk.ufl.edu/>, if you have any technical difficulties with Canvas.

All faculty, staff, and students of the university are required and expected to obey the laws and legal agreements governing software use. Failure to do so can lead to monetary damages and/or criminal penalties for the individual violator. Because such violations are also against University policies and rules, disciplinary action will be taken as appropriate. We, the members of the University of Florida community, pledge to uphold ourselves and our peers to the highest standards of honesty and integrity.

### Examinable Materials and Grades

\*\*\*\*\*THERE IS NO EXTRA CREDIT OFFERED IN THIS CLASS\*\*\*\*\*



**Unit Quizzes:** There will be **four** unit quizzes during the semester. Quizzes are designed to assess your understanding of course material to date, and are not cumulative. Each quiz contains **40 multiple-choice applied** questions with each question worth 1 point. **The lowest quiz grade will be dropped by the end of the semester; thus, only three quizzes will be included in your final grade.** All quizzes are closed book and closed notes.

For all quizzes, you are responsible for **all information** covered during the lectures and in the associated book chapters. Please note that I will *not* be able to cover the entirety of each chapter. As such, I highly recommend reading the text book as you progress through the course.

**There will not be quiz/exam make-up opportunities** unless there is an acceptable reason with evidence that is aligned with the UF absence policy (e.g., illness, serious family emergency, special curricular requirements, religious holidays, etc.). See the UF policy guidance on absences and make-up activities here: <https://catalog.ufl.edu/UGRD/academic-regulations/attendance-policies/#absencetext.Approved> Make-up quizzes/exams should be completed within one week of the original quiz/exam date. In the situation of multiple exams on the same date, see here for guidance: <https://catalog.ufl.edu/UGRD/academic-regulations/examination-policies-reading-days/> There are no special exams, optional papers or catch-up projects to compensate for poor exam performance. All quiz/exams are closed book and closed notes.



**Writing Assignments:** There will be **four (4)** writing assignments across the course of the semester worth 60 points (15 points each). More detailed instructions and rubrics can be found on CANVAS. These papers will be between two to four pages double-spaced and in APA 7<sup>th</sup> edition formatting.

**Late work will suffer a 2 point penalty (out of 30 possible points per assignment) for each 24-hour period after it was due.** If an assignment is due at 11:59pm, it is considered late at 12:00am. Submitting an incorrect or incomplete file will be considered late and will suffer the same penalty. **It is your responsibility to double-check if you have turned in the correct file. PLEASE NOTE:** Any work that is more than 48 hours late will NOT be accepted or graded. This policy does not apply to quizzes/exams, which will ONLY be administered late for University approved absences (see policy above).

**\*\* If you are unfamiliar with APA formatting, I recommend you check out the Purdue Online Writing Lab (OWL):**

[https://owl.purdue.edu/owl/research\\_and\\_citation/apa\\_style/apa\\_formatting\\_and\\_style\\_guide/general\\_format.html](https://owl.purdue.edu/owl/research_and_citation/apa_style/apa_formatting_and_style_guide/general_format.html)



**Class Assignments:** At several points throughout the semester, you will complete 11 small assignments worth 2 points each for a total of 20 points toward your final grade. The lowest assignment grade will be dropped. These assignments will usually be short, vary based on the topic, and may take the form of a mini-quiz, activity, or reflection. Unless otherwise indicated, assignments will be graded for completion.



**Research Requirement:** There is a Psychology Department requirement that all students enrolled in PSY 2012 participate in a research experience. The deadlines for this requirement will be posted on CANVAS as soon as they become available to the instructor (usually within the first week – week and a half of class). Completion of this requirement affects your course grade based on the amount of research credits you earn.

**DO NOT (!!!!) wait until the last minute to complete this requirement.** Mid-semester onward tends to get pretty hectic with regards to coursework. Also, the longer you wait, the harder it will be to get all of the required credits. This has been a problem in the past for students who wait until the last minute. More information will be posted on Canvas at the beginning of the semester.

### Grading Scale

| Assignment  | Points | Maximal Percentage of Grade |
|---|--------|-----------------------------|
| Unit Quizzes (4 @ 40 points each, 1 dropped)        | 120    | 54.30%                      |
| Writing Assignments (4 @ 15 points each)            | 60     | 27.15%                      |
| In-Class Assignments (5 @ 5 points each, 1 dropped) | 20     | 9.05%                       |
| Research Experience                                 | 21     | 9.50%                       |
| Total   | 221    | 100%                        |

| Grade | Scale   | Grade | Scale  | Grade    | Scale  |
|-------|---------|-------|--------|----------|--------|
| A     | 93-100% | B-    | 80-82% | D+       | 67-69% |
| A-    | 90-92%  | C+    | 77-79% | D        | 63-66% |
| B+    | 87-89%  | C     | 73-76% | D-       | 60-62% |
| B     | 83-86%  | C-    | 70-72% | E (Fail) | <60%   |

**\*\*\*\*Note: Final total percentage points with a decimal value equal to or greater than .5 will be rounded to the next number (hooray!).** Beyond this, grades will not be curved. For further information about current UF grading policies for assigning grade points, please see <https://catalog.ufl.edu/ugrad/current/regulations/info/grades.aspx>.

### Policy for Disputing a Grade

You will have **one week** (including weekends and holidays) after any course material grade has been posted to dispute your grade. The exception will be the LAST quiz because there won't be enough time to complete disputes and turn grades in. Disputes will NOT be accepted after the day of the last quiz. If you



want to dispute a grade you will need to write a paragraph explaining the dispute with specific details explaining why you believe you deserve credit. In your paragraph, please explain why your answer is correct with references to the material in the text for each question or writing assignment you are disputing. Then send a private email with this information to the instructor's e-mail address.

**I am not willing to give a passing grade to those who do not abide by the UF honor code. Any student who cheats or helps another student cheat will receive an E (Fail) in this class. When students enroll at the university, they commit themselves to the standard drafted and enacted by students.**

### Honor Code

**Preamble:** In adopting this honor code, the students of the University of Florida recognize that academic honesty and integrity are fundamental values of the university community. Students who enroll at the university commit to holding themselves and their peers to the high standard of honor required by the honor code. Any individual who becomes aware of a violation of the honor code is bound by honor to take corrective action. The quality of a University of Florida education is dependent upon community acceptance and enforcement of the honor code.

**Honor Pledge:** We, the members of the University of Florida community, pledge to hold ourselves and our peers to the highest standards of honesty and integrity by abiding by the Honor Code. On all work submitted for credit by students at the University of Florida, the following pledge is either required or implied:

**"On my honor, I have neither given nor received unauthorized aid in doing this assignment."**

It should be clear that academic dishonesty, such as cheating, is NOT tolerated at the University of Florida. Cheating is defined in the University Handbook, and it is the student's responsibility to be familiar with its many forms (including plagiarism). If there is a suspected academic honesty violation, the Student Honor Code Procedures will be followed.

### Study Skills

This class covers a large amount of material and it is crucial for students to keep up with the reading and study regularly. The MOST IMPORTANT study habits are:

- 1) read the material when it is assigned (seriously just do it, trust me on this one y'all)**
- 2) read and study the text before and after hearing the lectures on those topics**
- 3) study and test yourself in-depth on the days before each exam**

It is very important to read the assigned text by the due date on the syllabus. This reading will provide you with some basic knowledge for each topic, to help you to understand the material more fully when you hear the lectures. A day or two after each lecture, read back over your notes to make sure that you understand everything you have written. Be certain, for example, that you can find a definition in your notes for each new term that was presented in class. Class attendance is not required, though highly encouraged. However, if you are having difficulty with the material, or if you are not performing as well as you want on exams, you should do the following: attend class EVERY TIME, pay close attention to the lecture, review the terms and alternative hypotheses sections in order to focus your reading, and use good note-taking skills:

Your text is well organized. Important terms are defined separately in the text. Always read the chapter summary and try to answer the questions in the text. Use the text headers to help you identify main ideas, and take note of any definitions in the text. Compare these to the definitions received in class.

You can improve your knowledge and your test scores by reviewing all available learning materials and online resources provided for your text. If a term is not listed there, you do not need to know its meaning for the exam.

If a term is listed there, you should be prepared to answer any question about that concept from class or the book. In addition, I will periodically post a copy of lecture slides on the website after the lectures are completed.

Everyone has a different preferred way of studying. Some students find that outlining the text or rewriting class notes is a good way to study. Others find that flash cards are a good study aid -- they put an important term on one side of the card and put its definition on the other side, maybe with an example (make up your own example if you can). You may benefit from rewriting ideas in your own words, or it may help you to study aloud, defining terms, and explaining theories to a "study buddy." Complete all of the "Complete Review Systems" available in your textbook before the exam.

It doesn't matter which method works best for you -- the important thing is to study and be involved in studying over a period of time. Don't try to cram it all in at the last minute. There will be no worksheets or homework assignments to ensure that you start reading the material early. You will have to take the initiative yourself to get started right away.

**REMEMBER!!!!!!! The most important study habits are 1) read all assigned pages by the date they are assigned; 2) read and study the text before and after hearing the lectures on those topics, and 3) study and test yourself in-depth on the days before each exam, using the "terms and alternative hypotheses" sections, and all available review sections at the end of each chapter.**

### Tentative Course Schedule

| Summer B 2022 |                                   |                      |
|---------------|-----------------------------------|----------------------|
| DATE          | LECTURE TOPIC                     | READING              |
| 06/27/22      | Welcome to Psy 2012!              | Syllabus + Chapter 1 |
| 06/28/22      | Intro to Psych + Research Methods | Chapters 1 & 2       |
| 06/29/22      | Research Methods                  | Chapter 2            |
| 07/30/22      | Biological Psychology             | Chapter 3            |
| 07/01/22      | Biological Psychology             | Chapter 3            |



|          |   |   |
|----------|---|---|
| 7/03/22  | WRITING ASSIGNMENT #1                           | <b>WRITING ASSIGNMENT #1 DUE SUNDAY @11:59PM ET</b>   |
| 07/02/22 | DEADLINE  | (SOFT) DEADLINE TO REQUEST DISABILITY SERVICES        |
| 07/04/22 | NO CLASS  | <b>JULY 4<sup>TH</sup> HOLIDAY OBSERVED</b>           |
| 07/05/22 | Sensation & Perception                          | Chapter 4   |
| 07/06/22 | Sensation & Perception                          | Chapter 4 & REVIEW!!!                                 |
| 07/07/22 | QUIZ 1  | Quiz 1: CH 1 – 4 <b>DUE @ 11:59PM</b>                 |
| 07/08/22 | Consciousness + Learning                        | Chapter 5 & Chapter 6                                 |
| 07/08/22 | Learning  | Chapter 6   |
| 07/10/22 | WRITING ASSIGNMENT #2                           | <b>WRITING ASSIGNMENT #2 DUE SUNDAY @ 11:59 PM ET</b> |
| 07/11/22 | Memory  | Chapter 7   |
| 07/12/22 | Memory  | Chapter 7   |
| 07/13/22 | Thinking, Reasoning...                          | Chapter 8   |
| 07/14/22 | Thinking, Reasoning...                          | Chapter 8 & REVIEW!!!                                 |
| 07/15/22 | QUIZ 2  | Quiz 2: CH 5 – 8 <b>DUE @ 11:59PM</b>                 |
| 07/17/22 | WRITING ASSIGNMENT #3                           | <b>WRITING ASSIGNMENT #3 DUE SUNDAY @ 11:59 PM ET</b> |
| 07/18/22 | Intelligence                                    | Chapter 9   |
| 07/19/22 | Human Development                               | Chapter 10  |
| 07/20/22 | Human Development + Emotion & Motivation        | Chapters 10 & 11                                      |
| 07/21/22 | Emotion & Motivation + Stress, Coping, & Health | Chapters 11 + 12                                      |
| 07/22/22 | Stress, Coping & Health                         | Chapter 12 & REVIEW!!!                                |
| 07/24/22 | WRITING ASSIGNMENT #3                           | <b>WRITING ASSIGNMENT #3 DUE SUNDAY</b>               |

|          |                              |   |
|----------|------------------------------|---|
|          |                              | <b>@ 11:59 PM ET</b>                                  |
| 07/25/22 | QUIZ 3                       | Quiz 3: CH 9 – 12 <b>DUE @ 11:59 PM</b>               |
| 07/26/22 | Personality                  | Chapter 14  |
| 07/27/22 | Personality                  | Chapter 14  |
| 07/28/22 | Social                       | Chapter 13  |
| 07/29/22 | Social                       | Chapter 13  |
| 07/31/22 | WRITING ASSIGNMENT #4        | <b>WRITING ASSIGNMENT #4 DUE SUNDAY @ 11:59 PM ET</b> |
| 08/01/22 | Psych Disorders              | Chapter 15  |
| 08/02/22 | Psych Disorders + Treatments | Chapters 15 & 16                                      |
| 08/03/22 | Psych & Bio Treatments       | Chapter 16  |
| 08/04/22 | Catch up & Review            | Catch up & Review                                     |
| 08/05/22 | QUIZ 4                       | Quiz 4: CH 13 – 16 <b>DUE @ 11:59 PM</b>              |

Note: Please read the chapter before the specific class meetings. Course schedule might change as the needs occur. It is your responsibility to keep up with the change by coming to class and stay updated. Also, It is not feasible to cover all of the materials in the textbook during the class meetings. Rather, I will focus on major and important themes in the chapters. **PLEASE READ THE BOOK!**

### Online Evaluation Process

Students are expected to provide professional and respectful feedback on the quality of instruction in this course by completing course evaluations online via GatorEvals. Guidance on how to give feedback in a professional and respectful manner is available at <https://gatorevals.aa.ufl.edu/students/>. Students will be notified when the evaluation period opens, and can complete evaluations through the email they receive from GatorEvals, in their Canvas course menu under GatorEvals, or via <https://ufl.bluer.com/ufl/>. Summaries of course evaluation results are available to students at <https://gatorevals.aa.ufl.edu/public-results/>.

### Campus Resources

#### Health and Wellness

U Matter, We Care: If you or a friend is in distress, please contact [umatter@ufl.edu](mailto:umatter@ufl.edu) or 352 392-1575 so that a team member can reach out to the student.

Counseling and Wellness Center: <http://www.counseling.ufl.edu/cwc/Default.aspx>, 392-1575; and the University Police Department: 392-1111 or 9-1-1 for emergencies.

Sexual Assault Recovery Services (SARS): Student Health Care Center, 392-1161.

University Police Department: 392-1111 (or 9-1-1 for emergencies).  
<http://www.police.ufl.edu/>

**Academic Resources**

E-learning technical support: 352-392-4357 (select option 2) or e-mail to

Learning-support@ufl.edu. <https://lss.at.ufl.edu/help.shtml>.

Career Resource Center: Reitz Union, 392-1601. Career assistance and counseling.

<http://www.crc.ufl.edu/>

Library Support: <http://cms.uflib.ufl.edu/ask>. Various ways to receive assistance with respect to using the libraries or finding resources.

Teaching Center: Broward Hall, 392-2010 or 392-6420. General study skills and tutoring.

<http://teachingcenter.ufl.edu/>

Writing Studio: 302 Tigert Hall, 846-1138. Help brainstorming, formatting, and writing papers. <http://writing.ufl.edu/writing-studio/>

Student Complaints Campus:

[https://www.dso.ufl.edu/documents/UF\\_Complaints\\_policy.pdf](https://www.dso.ufl.edu/documents/UF_Complaints_policy.pdf)

On-Line Students Complaints: <http://www.distance.ufl.edu/student-complaint-process>